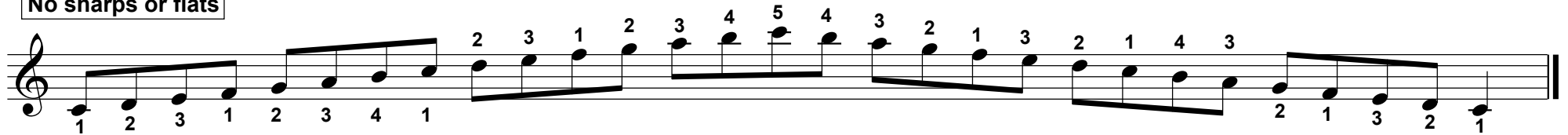


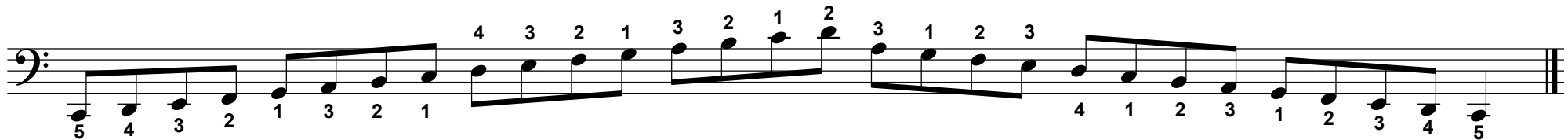
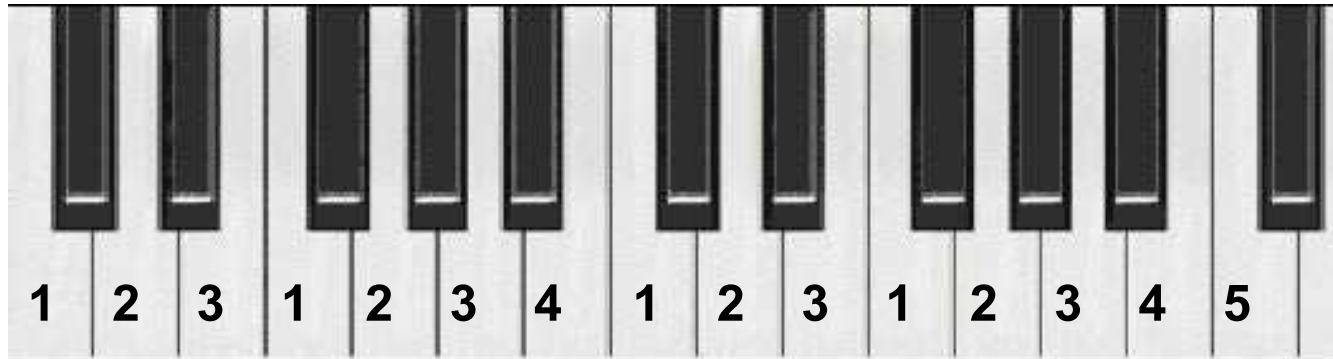
GRADE 1 SCALES FOR PIANO

C MAJOR SCALE

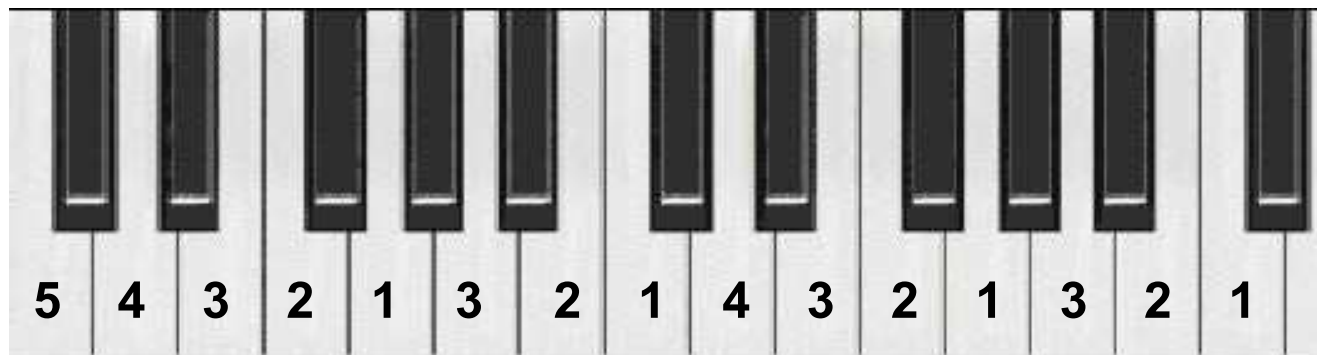
KEY SIGNATURE:
No sharps or flats



RH FINGER 4 PLAYS B



LH FINGER 4 PLAYS D



G MAJOR SCALE

KEY SIGNATURE:

One sharp: F#

Musical notation for the G major scale in treble clef. The scale is written on a single staff with a treble clef and a key signature of one sharp (F#). The notes are G, A, B, C, D, E, F#, G, A, B, C, D, E, F#, G. Fingerings are indicated by numbers 1-5 above the notes. Red dots highlight the F# notes. The notation includes a treble clef, a key signature of one sharp, and a double bar line at the end.

RH FINGER 4 PLAYS F#

Diagram of a piano keyboard showing finger placement for F#. The keyboard is shown from a top-down perspective, with white and black keys. The finger number 4 is written in yellow above the F# key in two positions: the first F# (F#4) and the second F# (F#5). Below the keyboard, the finger numbers 1, 2, 3, 1, 2, 3, 1, 2, 3, 1, 2, 3, 5 are written below the corresponding keys.

Musical notation for the G major scale in bass clef. The scale is written on a single staff with a bass clef and a key signature of one sharp (F#). The notes are G, A, B, C, D, E, F#, G, A, B, C, D, E, F#, G. Fingerings are indicated by numbers 1-5 below the notes. Red dots highlight the F# notes. The notation includes a bass clef, a key signature of one sharp, and a double bar line at the end.

LH FINGER 4 PLAYS A

Diagram of a piano keyboard showing finger placement for A. The keyboard is shown from a top-down perspective, with white and black keys. The finger number 2 is written in yellow above the A key in two positions: the first A (A3) and the second A (A4). Below the keyboard, the finger numbers 5, 4, 3, 2, 1, 3, 1, 4, 3, 2, 1, 3, 1 are written below the corresponding keys.

D MAJOR SCALE

KEY SIGNATURE:
Two sharps: F# & C#

Musical notation for the D major scale in treble clef. The scale is written on a single staff with a key signature of two sharps (F# and C#). The notes are D, E, F#, G, A, B, C#, D. The ascending sequence is marked with fingerings: 1, 2, 3, 1, 2, 3, 4, 1, 2, 3, 4, 5, 4, 3, 2, 1, 3, 2, 1, 4, 3. The descending sequence is marked with fingerings: 2, 1, 3, 2, 1.

RH FINGER 4 PLAYS C#

Diagram of a piano keyboard showing fingerings for the right hand (RH) finger 4 playing C#. The diagram highlights the C# key with a yellow '4' and shows the fingerings for the surrounding keys: 1, 2, 1, 2, 3, 1, 2, 1, 2, 3, 5.

Musical notation for the D major scale in bass clef. The scale is written on a single staff with a key signature of two sharps (F# and C#). The notes are D, E, F#, G, A, B, C#, D. The ascending sequence is marked with fingerings: 5, 4, 3, 2, 1, 3, 2, 1, 3, 2, 1, 2, 3, 4, 1, 2, 3, 1, 2, 3, 4, 5. The descending sequence is marked with fingerings: 4, 3, 2, 1, 3, 2, 1, 2, 3, 4, 1, 2, 3, 4, 5.

LH FINGER 4 PLAYS E

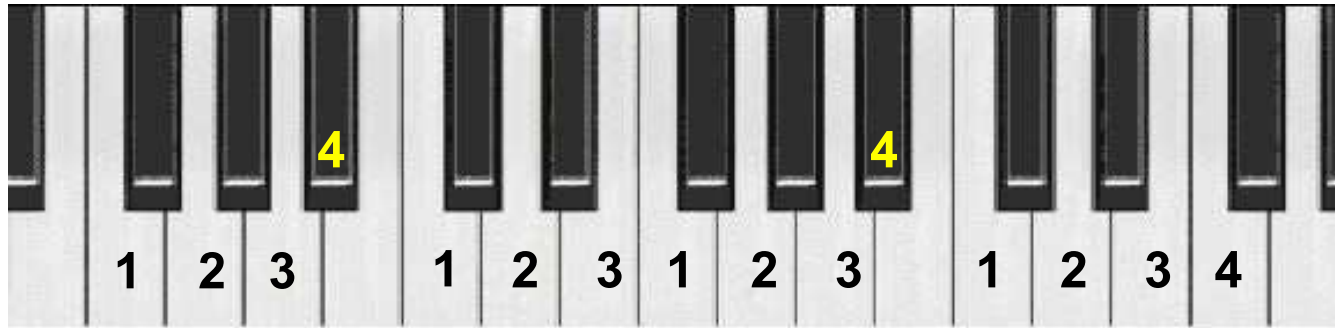
Diagram of a piano keyboard showing fingerings for the left hand (LH) finger 4 playing E. The diagram highlights the E key with a yellow '3' and shows the fingerings for the surrounding keys: 5, 4, 2, 1, 3, 1, 4, 2, 1, 3, 1.

F MAJOR SCALE

KEY SIGNATURE:
One flat: B \flat

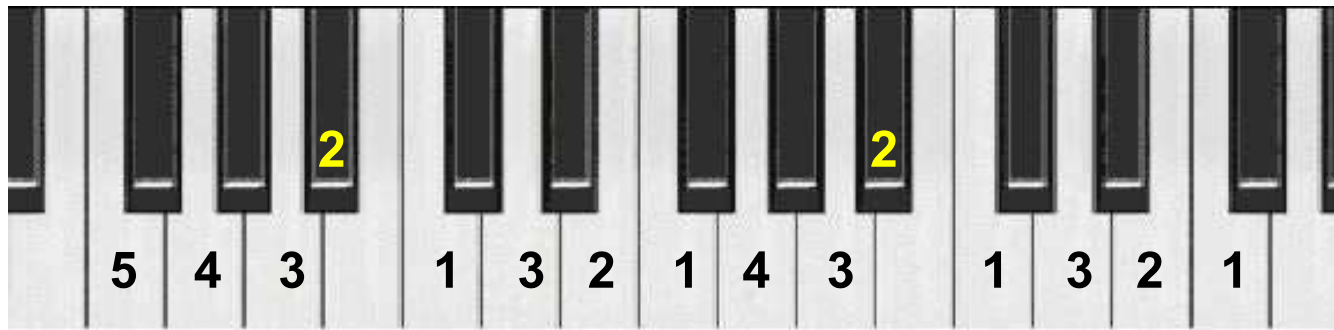
Musical notation for the F Major scale in treble clef. The scale is written on a single staff with a key signature of one flat (B \flat). The notes are: F4, G4, A4, B \flat 4, C5, D5, E5, F5, E5, D5, C5, B \flat 4, A4, G4, F4. Fingerings are indicated by numbers 1-4 above the notes. The B \flat notes are highlighted in red. The notes are grouped into four measures: F4-G4-A4-B \flat 4, C5-D5-E5-F5, E5-D5-C5-B \flat 4, and A4-G4-F4.

RH FINGER 4 PLAYS B \flat



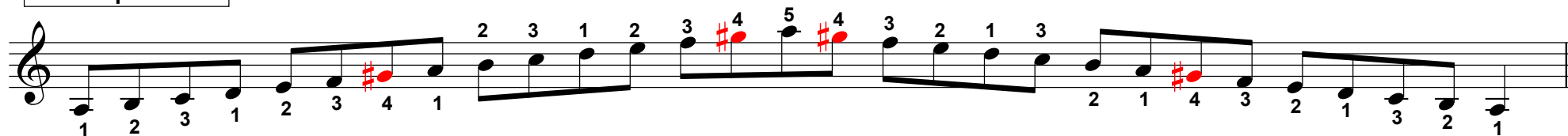
Musical notation for the F Major scale in bass clef. The scale is written on a single staff with a key signature of one flat (B \flat). The notes are: F3, G3, A3, B \flat 3, C4, D4, E4, F4, E4, D4, C4, B \flat 3, A3, G3, F3. Fingerings are indicated by numbers 1-5 above the notes. The B \flat notes are highlighted in red. The notes are grouped into four measures: F3-G3-A3-B \flat 3, C4-D4-E4-F4, E4-D4-C4-B \flat 3, and A3-G3-F3.

LH FINGER 4 PLAYS G

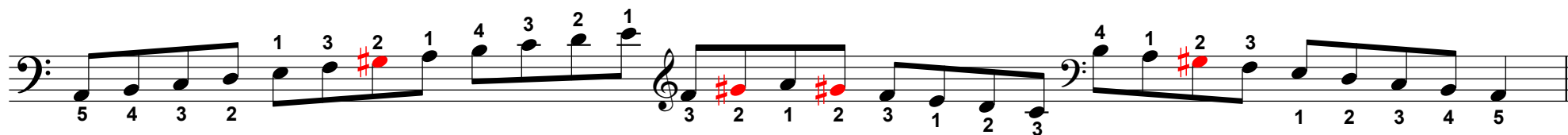


A HARMONIC MINOR SCALE

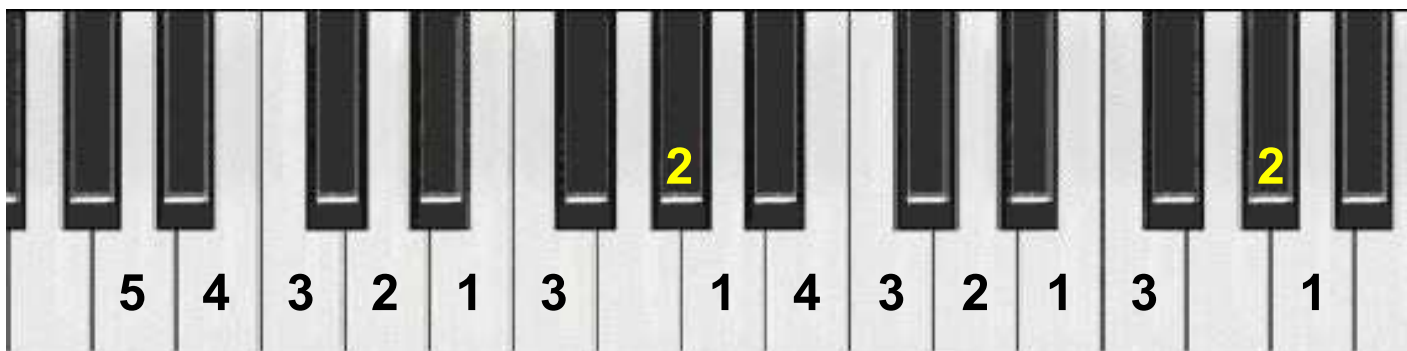
KEY SIGNATURE:
No sharps or flats



RH FINGER 4 PLAYS G#

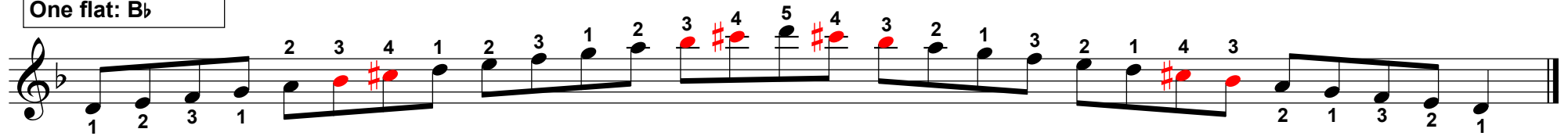


LH FINGER 4 PLAYS B

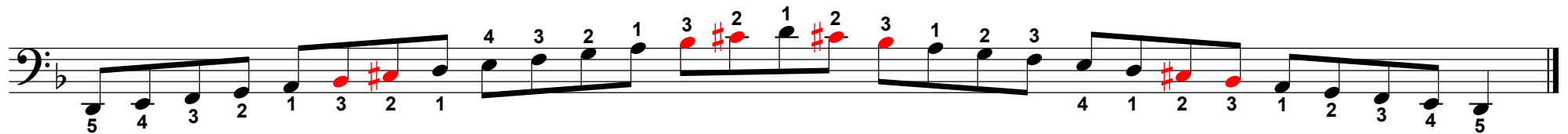
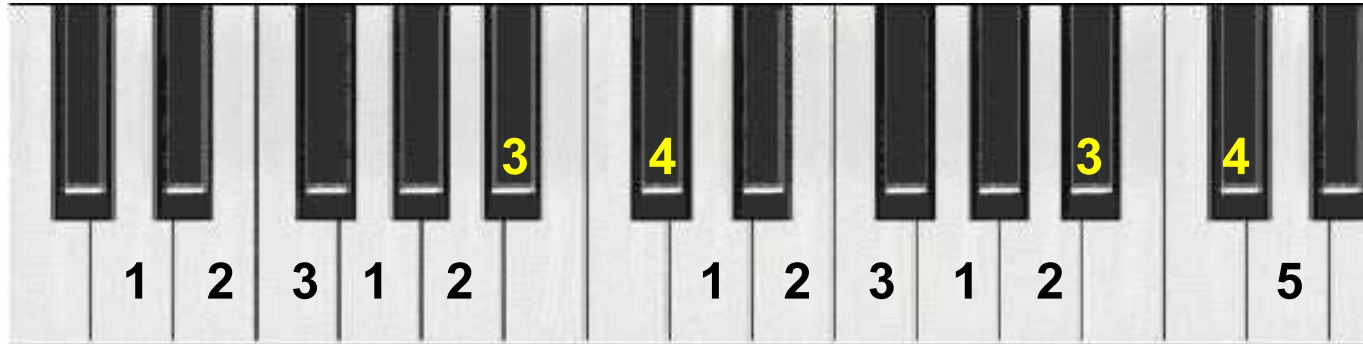


D HARMONIC MINOR SCALE

KEY SIGNATURE:
One flat: B \flat



RH FINGER 4 PLAYS C \sharp



LH FINGER 4 PLAYS E

